

# Positioned to grow our student reach and impact

Learning Ally is a non-profit organization dedicated to empowering students who are dyslexic, blind and visually-impaired to succeed.

Over the past several years Learning Ally has radically revamped the organization and significantly invested in the expansion of our programs and services. This included a major enhancement to our technology that improved the experience for our students and gave teachers the data and tools they need in the classroom.

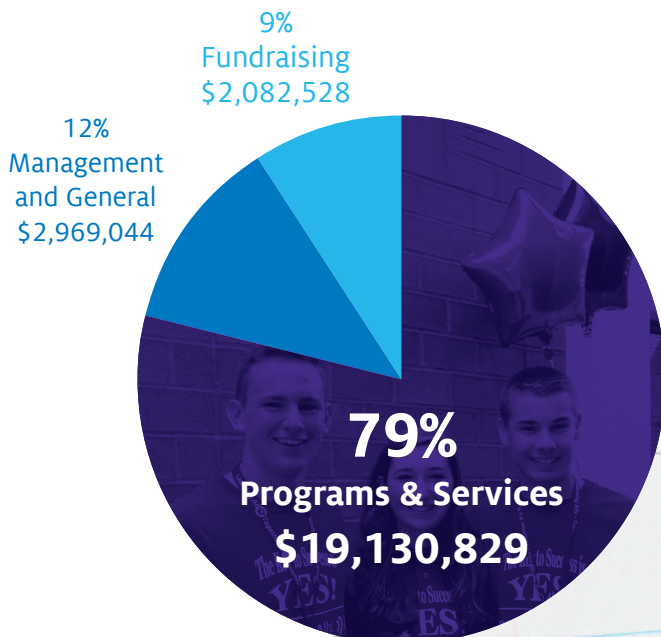
In years past, Learning Ally had relied on \$13 million of annual federal government funding, which ceased in 2012. We have worked hard over the past few years to rebuild our lost funding from diverse sources and significantly improve operational efficiencies (all while improving our solutions) — we are happy to report we have now achieved an operating surplus.



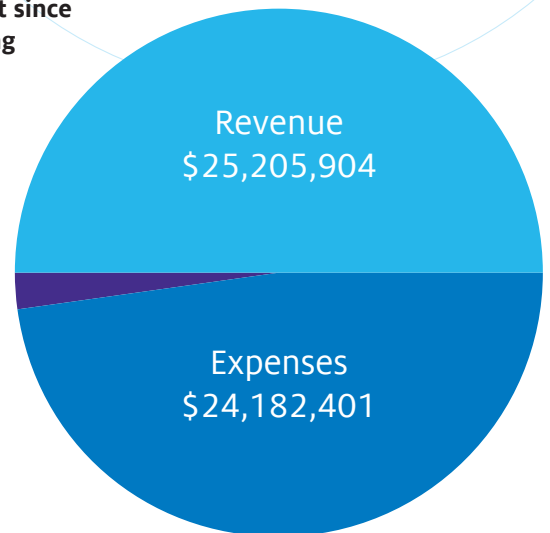
**OUR FUNDING DIRECTLY FURTHERS  
OUR MISSION, WITH 79¢ OF EACH  
DOLLAR SPENT SUPPORTING  
THE PROGRAMS AND SERVICES  
THAT HELP STUDENTS ACHIEVE  
THEIR PERSONAL BEST.**

**Investments in programs and services  
have led to nearly tripling the number of  
students we serve to 230,000 since FY14**

**In FY16 we have achieved a  
financial surplus, our first since  
the loss of federal funding**



**Surplus  
\$1,023,503**



**To find out more about Learning Ally,  
visit [LearningAlly.org/GetInvolved](http://LearningAlly.org/GetInvolved) or call 800.221.4792**



## Learning Ally National Board of Directors

### OFFICERS

Brad Grob *Chairman*  
 Harold J. Logan *Vice Chair*  
 Celeste V. Lopes, Esq. *Vice Chair*  
 Kimberlee S. Phelan, CPA *Treasurer*  
 Therese Llorente *Secretary*  
 Andrew Friedman\* *President & CEO*  
 Tim Wilson\* *CFO*

\*Not members of the Board of Directors

### BOARD MEMBERS

Marc Baranski  
 Joseph P. Benincasa  
 Nicole Channing  
 Deborah Jillson  
 Soonkyu (SK) Shin  
 Robert H. Writz  
 Donna Dillon Manning *Emerita*  
 Mary Lou McGee *Emerita*

From audited financial statements for fiscal year  
 ended June 30, 2016

**REVENUE** \$25,205,904

### EXPENSES

Production \$13,171,483  
 Services coordination \$5,959,346  
**Total Programs and Services \$19,130,829**

Administration \$2,969,044  
 Fundraising \$2,082,528  
**Total expenses \$24,182,401**

Revenue in excess of expenses \$1,023,503

**Net assets at June 30, 2016 \$28,003,713**

